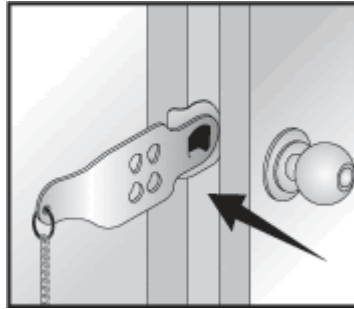
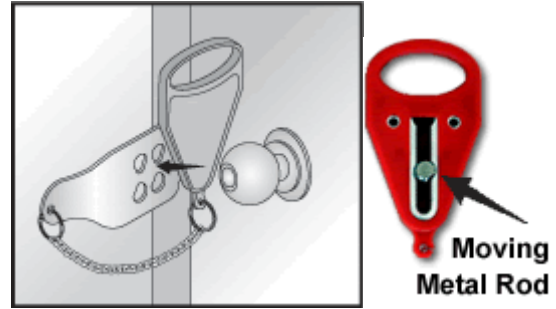


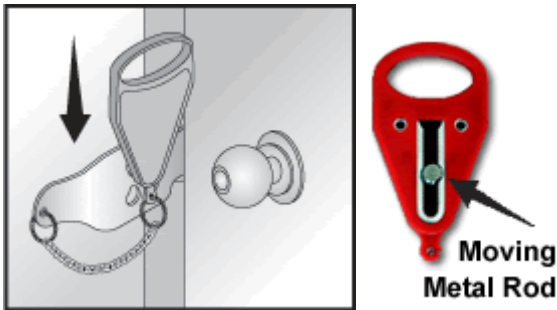
Instructions for Installing the ADD-A-LOCK



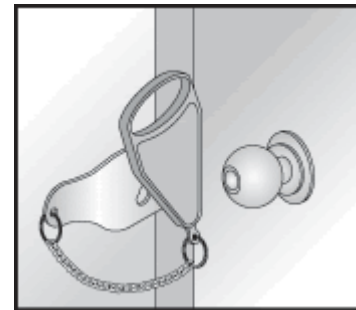
1. With the door in the open position, insert the claws of the body of the **ADD-A-LOCK** into the strike hole of the door jam.
(securing yourself in the room or house etc.)



2. Close the door, which will hold the body of the **ADD-A-LOCK** in place so that you can now insert the locking rod which is part of the red handle.



3. Insert the handle with the moving metal rod into the **top** slot of the **ADD-A-LOCK** metal body.



4. Release the handle so that it can drop to its lowest point, thus securing the door in the closed position.

Removing the ADD-A-LOCK

*Raise the handle until the locking rod is at the top of the hole in the body of the latch. Pull away the handle from the body, open the door and remove the **ADD-A-LOCK** from the door strike.

*Put Your **ADD-A-LOCK** back into your travel bag ready for your next trip or next to the door ready to use every evening when you are locking up for the night

*The ADD-A-LOCK shall be used in accordance with these instructions and only for the purpose for which it was intended, being a Portable Door Security Latch. Rishon Enterprises Inc.(Rishon) hereby limits the liability of Rishon to the purchase price of the ADD-A-LOCK. In no event shall Rishon be liable for any consequential, indirect, incidental, or special damages of any nature arising from the sale or use of the Product, whether in contract, tort, strict liability, or otherwise.

*The ADD-A-LOCK is to be used as an addition to the existing locking mechanism of the door and is not a substitute for such a mechanism.

*When applying the ADD-A-LOCK, please ensure that all occupants of the room are familiar with these instructions.