

# WARRANTY

## MANUFACTURERS LIMITED WARRANTY

Shake Awake Products are manufactured in an ISO 9001:2000 certified facility with strict quality control and inspection procedures. We take pride in the reputation we have built for products that provide longevity and value. In the unlikely event your SHAKE AWAKE product requires service please follow these procedures.

Do not return it to the distributor where you purchased it. We will repair or replace any Shake Awake® product for a period of 1 (one) year from date of purchase. The product must demonstrate to have failed though defects in materials or workmanship. Should any Shake Awake® product require service return it along with PROOF OF PURCHASE to us at the address below. . This warranty does not cover damage caused by misuse or accident.

There will be a \$5.95 service fee per product for processing, packaging, handling and return shipping. PROOF OF PURCHASE is required for all claims under this warranty. No return will be accepted, processed, or returned without processing fee and Proof of Purchase.

You may pay the service fee by Visa/MasterCard on our website or by including a check/money order with your returned product to:

**Shake Awake**  
**POB 1124**  
**Great Falls, VA 22066**  
**welcome@shakeawake.com**

Front of instruction sheet

# ENGLISH



OPERATING INSTRUCTIONS

## KEY FUNCTIONS:

- Selects Vibrating Alarm
- Disable Alarm
- Selects Audible Alarm
- Stop Alarm + Illuminate Display

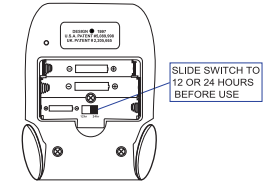
- Snooze Alarm
- Lock (disables all "Set" buttons)
- Set Time
- Set Alarm

## 1. TO SET TIME

Slide SET switch to "🕒". Press HOUR/MINUTE to actual time. If your **shake awake**® has an AM/PM display, "PM" indicator will appear when afternoon hours are in effect. After setting slide switch to "🔒" (LOCK). Slide switch to 12/24 HOUR before use.

## 2. TO SET ALARM

Slide SET switch to "🔔" (AL) appears on display. Press HOUR/MINUTE continuously until desired alarm time appears. After setting slide switch to "🔒" (LOCK).



## 3. TO ACTIVATE ALARM

Choose VIBRATING "🔊" or AUDIBLE "🔔" alarm. "🔔" will appear on display. When alarm activates slide ALARM switch to "🔒" to disable alarm or press "🔔" to stop alarm. ("🔔" will still appear and alarm will repeat every 24 hours.)

## 4. TO ACTIVATE ALARM WITH SNOOZE FUNCTION (Zzz)

Slide SET switch to "🔔". Press HOUR/MINUTE continuously until desired alarm time appears. Slide SET switch to "Zzz" position. (Z Z) will appear on display. Choose VIBRATING "🔊" or AUDIBLE alarm "🔔". When SNOOZE alarm activates press "🔔" to stop. "Z Z" will flash continuously and alarm will repeat every 8 minutes. To disable SNOOZE alarm return SET switch to "🔒" position. (Z Z) will disappear from display. (Note: To have SNOOZE alarm repeat every 8 minutes you must disable alarm within 1 minute from start. Flashing (Z Z) on the display indicates SNOOZE alarm is still activated.)

## 5. To press HOUR and MINUTE buttons at the same time for LCD fully display testing

**(WARNING: No allowed continuing the vibrating alarm by manual more than 5 Minutes.)**

## REMINDER:

Replace AAA battery when the icon "🔋" appeared and flashing.  
Replace 2-AA battery when the icon "🔋" appeared and flashing.  
Put 2-AA battery into compartment first when replace battery.

**NOTE:** Jack on the right side is an auxiliary output jack for an optional **shake awake**® strobe light.

Back of instruction sheet